



THE NEUTRINO GROUP

Intelligent People. Intelligent Business.

GENESIS NO LCD

GENESIS NO LCD MANUAL

Congratulations on your purchase of a new Genesis machine!

The Genesis was uniquely designed with you the student in mind.

It was designed to be ultimately simple yet still very powerful and full featured.

The Genesis machine has many advanced features, including paper like notes (PLN) a feature only available on Neutrino Group machines, dual serial port interfaces so that you can output to your CAT software and the Infinity2 software, in addition it comes with our unique patent pending, ground breaking key sensing technology.

This guide will walk you through all the features and functions of your Genesis.

We encourage you to follow us on Facebook at <https://www.facebook.com/pages/Genesis-Steno-Machines/854380947932750?fref=ts>

Or search for Genesis Steno Machines

Table of Contents

Introduction	5
System Requirements	5
Component Overview Assembled	7
Quick Startup Steps	8
Starting a Job on your CAT Software and Machine	10
Component Definition	11
Infinity Ergonomic View Identifications	11
Top View	Error! Bookmark not defined.
Mini LED Quick View.....	Error! Bookmark not defined.
Left-Hand Side View.....	Error! Bookmark not defined.
Back View	12
Attaching Your Infinity Ergonomic to the Tripod	13
Charging Your Infinity Ergonomic	13
Connecting Your Infinity Ergonomic To Your Computer via Bluetooth	Error! Bookmark not defined.
Changing Your Writer Type	Error! Bookmark not defined.
Connecting the Infinity Ergonomic to Your CAT Software When Using the TX Protocol Setting.....	15
Connecting the Infinity Ergonomic to Your CAT Software When Using the TX Protocol Setting.....	Error! Bookmark not defined.
Connecting the Infinity Ergonomic to Your CAT Software Using the PR Jumper Setting.....	Error! Bookmark not defined.
Adjusting Your Infinity Ergonomic FORCE and DEPTH Adjustment Overview, Terminology, and Method.....	17
Adjusting Your Infinity Ergonomic for Registration, Anti-Stacking, and Sheer Writing Awesomeness.....	18
Infinity2.....	21
-Initial Setup and Use-	21
-Initial Use-.....	Error! Bookmark not defined.
-Initial Keyboard Configuration-	Error! Bookmark not defined.

-Key Setting Tab-	22
-Graphic View Tab-	23
-Data View CR-	24
-Data View CR Advanced Settings-..	Error! Bookmark not defined.
Infinity Dielectric Buttons a.k.a. The Invisible Ones	Error! Bookmark not defined.
Infinity Mini LCD Menu Tree.....	Error! Bookmark not defined.
Using the Touch Screen.....	Error! Bookmark not defined.
-Start Screen-.....	Error! Bookmark not defined.
Using the Touch Screen.....	Error! Bookmark not defined.
-Main Job Window-.....	Error! Bookmark not defined.
-Utilities Screen-	Error! Bookmark not defined.
-Dictionary Tools-.....	Error! Bookmark not defined.
-Import/Export User Settings-	Error! Bookmark not defined.
-Key Settings Screen #1-	Error! Bookmark not defined.
-Key Settings Screen #2-	Error! Bookmark not defined.
-Time & Date Setup-.....	Error! Bookmark not defined.
-Communications and Audio Settings-.....	Error! Bookmark not defined.
-Diagnostics and File Management-..	Error! Bookmark not defined.
Troubleshooting	26
Cleaning Your Infinity Ergonomic.....	27
What to Do With Your Trade-In	Error! Bookmark not defined.



Contact Information

The Neutrino Group
 13762 Colorado Blvd #124-177
 Thornton, CO 80602
 (303) 453-0384 Office
 (303) 374-2777 Fax
support@theneutrinogroup.com
<http://www.infinitytraditional.com>

Revision Date 06/21/2015

This page was intentionally left blank.

Introduction

Serial (UID) Number:_____

The Genesis comes from the factory configured with the Baron TX protocol for compatibility with all steno software's. Use the writer type circled above for your writer designation.

Please use the guide below to set your CAT Software

Eclipse = Gemini TX	Case Catalyst = Transcriptor X
AristoCAT = Baron TX	ProCAT= Baron TX
Digital CAT = Baron Realtime	SmartCAT = Gemini TX Beta
TurboCAT = Baron TX	

*** An incorrect protocol selection in your CAT software will cause undesirable results at best or zero communication at worst.**

System Requirements

- **Windows PC running, Windows 7, or Windows 8**
- **Windows-compatible CAT Software installed**
- **One free USB 2.0 ports for your writer.**

Cleaning Your Genesis

To clean your Genesis you may use a can of compressed air to blow off any debris. Then you may use an alcohol swab and/or a paper towel with rubbing alcohol on it to clean the case, the keys, and the rest of the writer.

Please turn off your machine and allow the alcohol to dry before you turn the machine back on.

DO NOT USE WATER or submerge your writer in any liquid. If you do get your writer wet, immediately turn the machine off and unplug it while turning the machine upside down to dry so that the liquid will drain away from the electronics.

Troubleshooting

The machine is turned on but it is not communicating with my CAT software

Wired:

- If wired, verify that you have selected the correct COM port and writer type in your CAT software.
- Ensure that you have started a job in I2 prior to starting real-time in your CAT software.

My writer will not turn on.

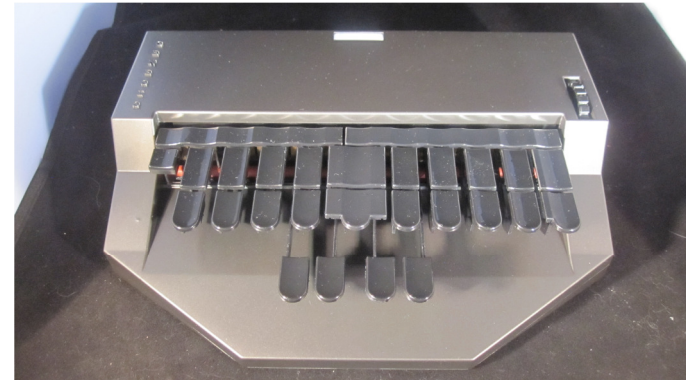
- Plug in your writer into your computer via the USB cable.
- Ensure your computer is turned on, and that USB port has power.
- Replace your USB cable
- Contact your sales channel for repair

Troubleshooting

The Genesis is producing garbled output.

- Verify that you have the correct writer type selected.

Component Overview Assembled



Genesis no LCD steno machine



Tripod



USB Cable

Quick Startup Steps

1. Download the install package form the www.infinitytraditional.com website. By going to Support and Downloads and locating the “Genesis Setup Files”. *You will need to create an account but it is a \$0.00 transaction.*
2. Unzip the Genesis Setup Files
3. Install the Infinity2 Software laocated inside of that package.
4. Connect your Genesis via the USB cable
5. Push the power button for 1 second to turn on your Genesis
6. Install the USB driver (*most windows 8 computers will do this automatically if connected to the internet or you may USB drive install located in your “Genesis Setup Files”*)
The Genesis machine will establish two ports the first is for your I2 software the second is for your CAT software. *You may check your Device managers under ports to locate these numbers directly.*
7. Open the Infinity2 software and it will automatically try discover and connect to you Genesis machine. Make a mental note of the comport it finds your Genesis on.
8. Open your CAT software a set the protocol and real-time comport to the second USB port
9. To start writing into your CAT software you must start a Job on the machine using I2. Under Utilies and Genesis Start Job

Infinity2 -Data View CR-

Save Values — Once you have made changes to your settings, click “Save Settings” to commit them to the memory of the machine.

Restore Previous — This will restore the last known good setting but will not undo a restore default.

How and why do you make adjustments to these values?

Here are the settings that will address most issues.

Dragging

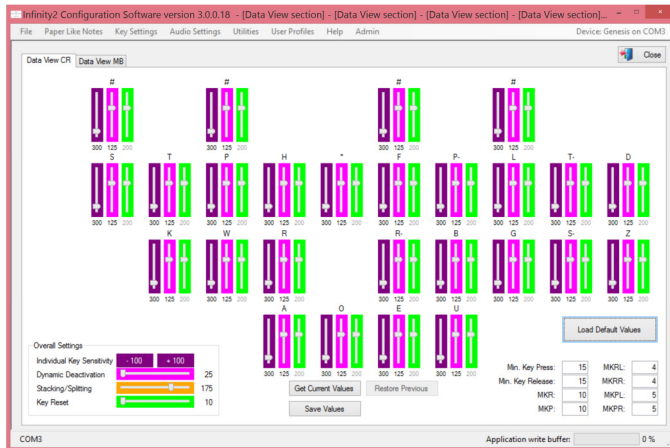
If you are dragging (accidently adding a key into a stroke because your finger has a tendency to hit it by mistake) you will increase the IKS value by clicking or dragging the slider on the corresponding burgundy bar “Save Setting.”

Dropping

If you are dropping (have a letter not show up when you want it to), you can make a key more sensitive by lowering the IKS value by clicking or dragging the slider on the corresponding burgundy bar “Save Setting.”

Infinity2 -Data View CR-

For most people, this is the screen you will spend the most time on. It allows you to adjust your writer's key activation and anti-stacking settings while you are actually writing into a job in your CAT software.



When you first enter this screen with your writer connected the data will automatically populate into the screen. Remember, the Infinity2 software is just a viewing tool. All the settings are actually stored in the writer.

Defaults — This will reset all of your Data View CR files to the original default setting. Only do this if you want to go back to factory there is no way to restore your particular settings if you perform this function.

For individual help or questions, please contact the group you purchased your machine through.

Prior to calling, ensure you have the following; a high speed internet connection available, the computer you plan to use with your Genesis and your Genesis writer with the entire package contents.

Starting a Job on your CAT Software and Machine

1. Connect the USB cable to your computer and Genesis machine.
2. Push and hold the power button for 1 second on the back of your Genesis until you hear a single beep, then let the button go
3. Open I2 and Start a Job under Utilities and Genesis
4. Start your CAT software
5. Start Realtime

Infinity 2 -Graphic View Tab-

The Graphic view tab is powerful. This tool allows you to visualize a key as you are writing. You can isolate a single key and watch the key travel, validate that it is properly configured, and then you can combine it with strokes and see how things change. This can all be done while altering the key's activation or deactivation point. You can even disable a key.

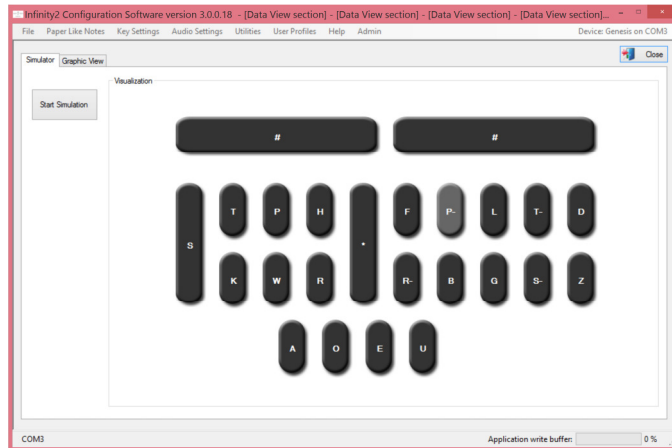


1. To change keys you are looking at simply use the pulldown and select the key you would like to view
2. Now watch the key and see how it works.
3. You may adjust the various values and see if that improves that particular keys response for you.

If you make adjustments you must click save settings for those to be maintained.

Infinity2

-Key Setting Tab/ Simulator Screen-



In the simulator tab you may press the button on your machine and the corresponding key will highlight on the screen. If they do not it is possible they are not sensitive enough so please refer to the Key setting / Data View tab.

In addition you may click on a particular key and it will take you to the Graphic view tab and you may see and make adjustments to a particular key on that tab. This only applies to a single key and is not as efficient as the Data View Tab.

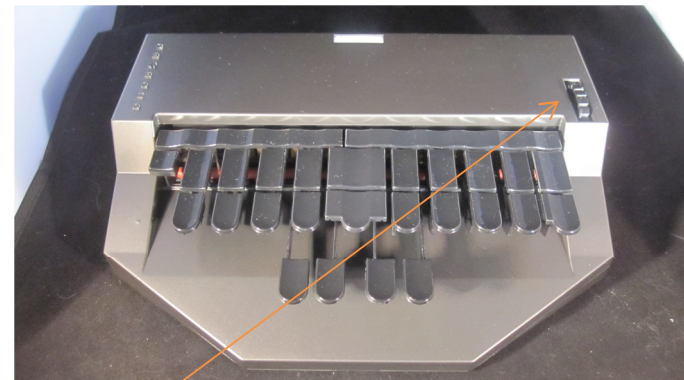
Infinity 2

Component Definition

Genesis Writer— The Genesis comes in one of two configurations. Either with or without a 7" touch LCD. This manual is only for the no LCD version.

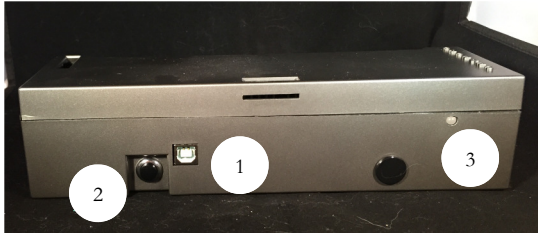
USB A to USB B Cable — This cable allows you to connect your Infinity Ergonomic directly to your computer. This cable not only allows you to write Realtime to your CAT software, but also allows you to connect your writer to the Infinity2 key configuration software.

Infinity Ergonomic View Identifications



Depth adjustment Wheel

Back View



- 1. USB Connector** — The USB mini connector allows you to connect to your computer via a USB port (device driver must be installed).
- 2. Power Button** — The Genesis uses a unique soft power switch. To power the writer on, press and hold the button for 1 second. To power the writer down, press and hold the power button for 4 seconds. If you are in a job file, you must exit the job first prior to shutting the writer down.
- 3. LED Indicator** — The led will turn Red when plugged into your computer or orange if it is turned on.

Infinity2 -Initial Setup and Use-

The installation of the Infinity2 software is incredibly easy. Like most Windows installs, simply click “setup” and then “next” through the entire sequence until you get to the finish button.

There is one caveat you should be aware of. In the event that you are on an older version of Windows, you must install Microsoft Dot Net.

Please note the following:

- 1. You must be plugged in via USB cable when you are using the Infinity2 program.**
2. I2 will automatically discover your writer and connect to it.
3. If it does not you manually identify the comport it should connect to by opening the file menu and communication settings and choosing the first comport listed in device manage.

Adjusting Your Infinity Ergonomic for Registration, Anti-Stacking, and Sheer Writing Awesomeness

Min. Key Press - Minimum Key Press – The minimum amount of time in milliseconds that a key must stay active to be considered a stroke.

Min. Key Release - Minimum Key Release – The minimum amount of time in milliseconds that a key must remain above DACT (deactivation) before it can be included in an additional stroke.

MKR - Multiple Release Percent – The number of keys that must be released when the MKP (multiple key press) value is in use.

MKP - Multiple Key Press – When a user presses a combination of right- and left-hand keys that total at least the MKP, the MKP rule will be enabled.

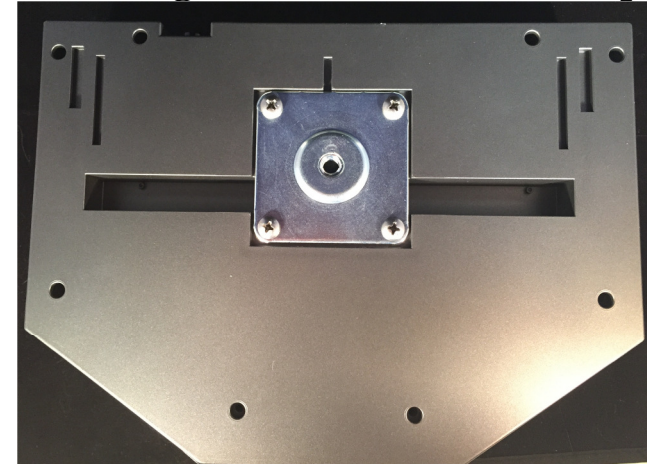
MKRL - Minimum Release Left – The number of keys that must be released by the left hand when the MKPL (multiple key press left) is active.

MKPL - Multiple Key Press Left – When the total left-hand keys pressed meets or exceeds the MKPL (multiple key press left) number, then the MKPL rule is enabled.

MKRR - Minimum Right Release -- The number of keys that must be released by the right hand when the MKPR (multiple key press right) is active.

MKPR - Minimum Key Press Right - When the total right-hand keys pressed meets or exceeds the MKPR (multiple key press right) number, then the MKPR rule is enabled.

Attaching Your Genesis to the Tripod



The Genesis will attach to a specialized tripod only it is not compatible with T-top tripods. To attach, insert your screw connector into the center hole. Adaptor and rotate clockwise until tight.

Two release turn counter clockwise 360 degrees

Charging Your Genesis

Your Genesis no LCD does not have an internal battery and can only operate when connected to you USB port of the computer.

point of the keystroke where the key transitions from the active state to the deactive state. Your machine will include this letter in the stroke. Deactivation is also a relative value. It is a calculated based on a percentage from the bottom of your stroke where the key is released. You have 7 unique positions ragind in value from 25 to 200 or 2.5% to 20%

Key Reset – This is how quickly the key will reset once it deactivated in preparation for the next stroke again there are 7 unique values typically 100 is the best setting for most people.

Stacking/Splitting – Is the timing between the initial side and final side of the keyboard and used to auto combine or spilt strokes based on the timer in milliseconds. You have 9 unique settings typically 125 works wonderful but for lower speed students this number may need to be increased and for higher speed writer sis may need to be reduced.

Overall Settings – This box allows you to quickly over rider the individual key settings and set all of the keys at once. IT is suggested that this feature is only under for gross or major adjustments as it can render your previous adjustments moot.

Adjusting Your Genesis for Registration, Anti-Stacking, and Sheer Writing Awesomeness

Now that we have covered the basics of your machine, it's time to delve into some more advanced topics. The following terms will help you understand what truly makes an Infinity an Infinity, and will teach you how to get the most out of your writer.

Individual Key Settings (IKS)— You will see that we have expanded on the idea of individual key sensitivity, not because we can't make those adjustments, but because it's an over simplification of what the Genesis is capable of.

Infinity2—Infinity2 is the second part of any Genesis machine. It allows every Genesis owner, with or without a screen, to see the settings inside of the machine. It is only for viewing and setting modifications. It doesn't actually store any information but, rather, it allows you to see the information and settings inside of your Genesis and interact with them.

Individual Key Sensitivity — Otherwise known as or as the activation threshold. This is the relative change of the key position that activates the stroke. The larger the number the less sensitive the key becomes.

Dynamic Deactivation — Otherwise known as DACT or as the deactivation point. This is the relative

Connecting the Genesis to Your CAT Software

While all CAT software will not be represented on this page, please be aware that with a TX you will be looking for the Baron TranscriptorX, BARON TX, or the TranscriptorX writer for your Realtime selection. The Realtime selection may be based on the version number of your CAT software. Please check with your CAT software vendor or a

CASE CATALYST

In Case Catalyst, go to the Realtime input screen and choose the Baron TranscriptorX writer and the corresponding COM port.

ECLIPSE

In Eclipse, go to your “User Settings” tab. Choose “input,” select the Baron TranscriptorX writer and the corresponding COM port.

Digital CAT

In Digital CAT, go to the Translator menu and choose “input.” Select the Baron Realtime option and the corresponding COM port.

SmartCAT

In SmartCAT, go to the “set up realtime options” and choose Gemini TX (Beta) and the corresponding COM port.

AristoCAT

In your user file you will choose the Baron TX writer

and the corresponding COM port.

All Other Software— While we work with every major software currently on the market and most of the older software packages, we cannot give exact instructions as to where to find your Realtime input settings in every case. You will need to reference your user manual or look for the writer types mentioned above.

Adjusting Your Genesis Depth of stroke.

The Genesis offers 6 unique depth settings. Rotate the dial forward or backward for longer or shorter strokes.

Depth—The depth of the stroke is the distance that the key travels until it stops. The depth of stroke is always measured at the vowel keys and at the longest point of the vowel keys. **When you change the depth, you may change the overall sensitivity of a key.** For example going from a long stroke to short stroke would lessen the overall key sensitivity or going from a short to a long would increase the overall sensitivity.